

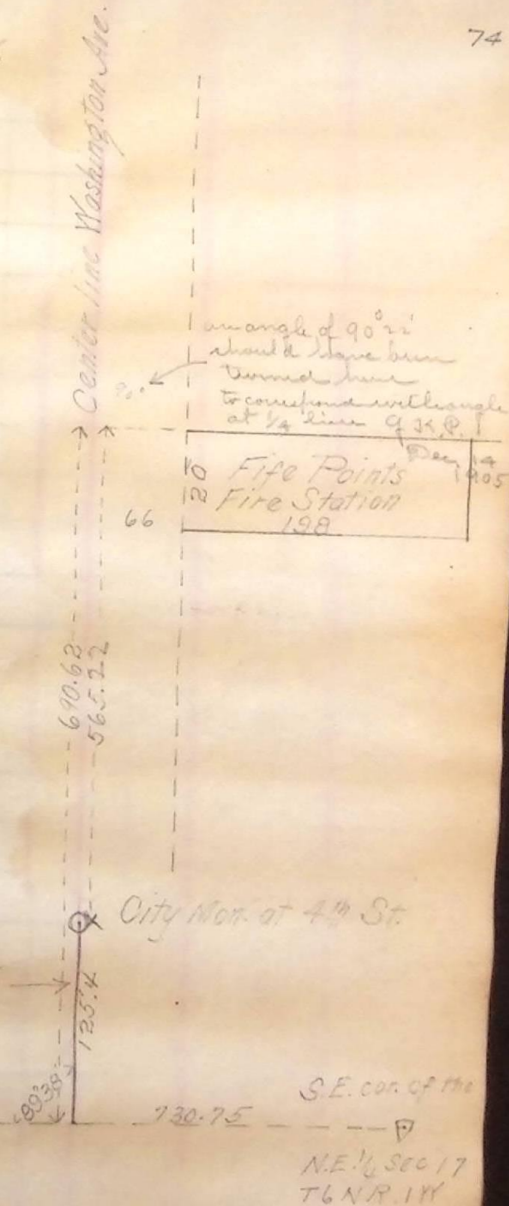
Survey for Five Points Fire Station

Monday Aug 10th 1896

Description

A part of the north east 1/4 of Sec. 17 T6 N R 1 W.
 Beginning at a point 10.464 chs. (690.62) ft.
 north 10.97 chs. (664.62 ft.) West from the south east
 corner of said 1/4 Sec. on the east line of
 Washington Ave. & running thence east 3 chs. (198 ft.)
 thence south 20 ft. thence west 3 chs. (198 ft.) thence
 north 20 ft. along the east line of Washington
 Ave. to place of beginning.

This distance
 measured on the
 ground = 124.55
 Dec. 14 1905
 G. J. P.



54465 Apr 30 1896